



Electrical Distribution Safety

INTRODUCTION

This notification is to inform your LDC that ESA has on record that there are zero (0) transformers that are a solidly-grounded wye-connected secondary system and there does not exist a grounded neutral conductor between the transformer’s secondary neutral terminal and the customer’s service entrance equipment, within your LDC’s service territory.

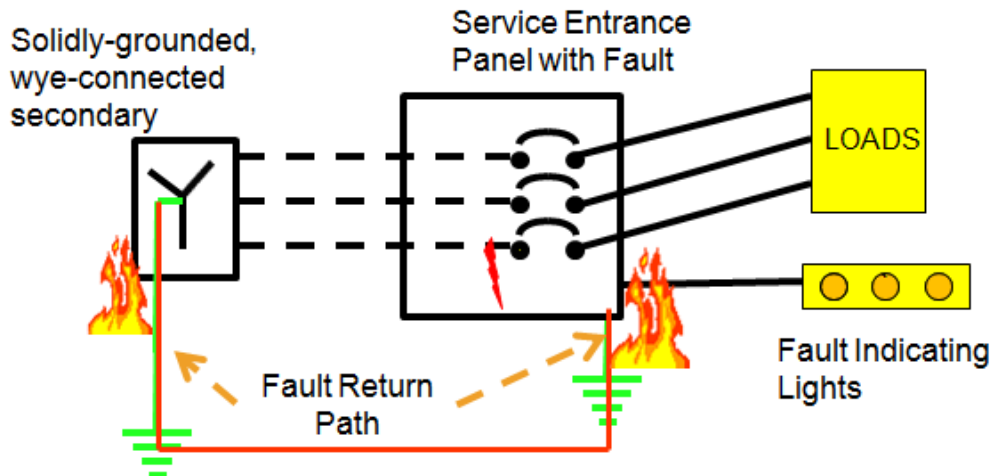
DETAILED INFORMATION

ESA considers the program started under Flash Notice FN-01-18 (Phase 1) to be completed by your LDC. If you believe you have received this notification in error, please contact Utility.Regulations@electricalsafety.on.ca.

ESA will not use the data collected under Flash Notice FN-01-18 (Phase 1) in order to assess compliance with Regulation 22/04. The information was only used to assist in mitigating any potential hazard.

Going forward, ESA will assess all installations which were not submitted under this program and match this specific configuration, for compliance with Regulation 22/04 and the Electricity Act.

SCHEMATIC: POTENTIAL FAILURE MODE



*Note – Fault Indicating Lights were not always a requirement within the Ontario Electrical Safety Code, at one time was only a recommendation.

ADDITIONAL INFORMATION

Information requests and follow-up may be directed to ESA at Utility.Regulations@ElectricalSafety.on.ca.