



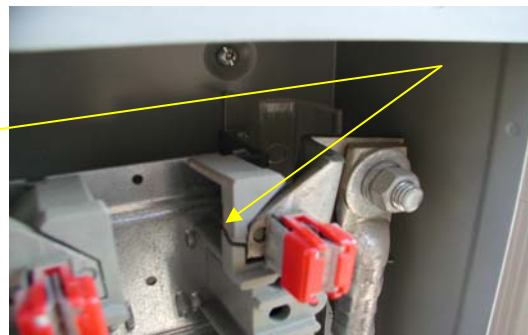
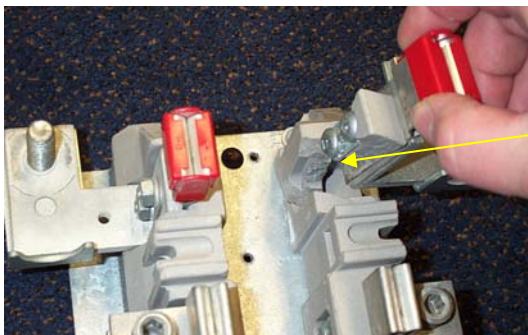
Electrical Distribution Safety

GENERAL STATEMENT:

ESA and E&USA have been made aware and have been investigating meter base failures with LDCs. Caution is required when working on any meter base as failures, of the nature described below, can occur.

SAFETY AWARENESS:

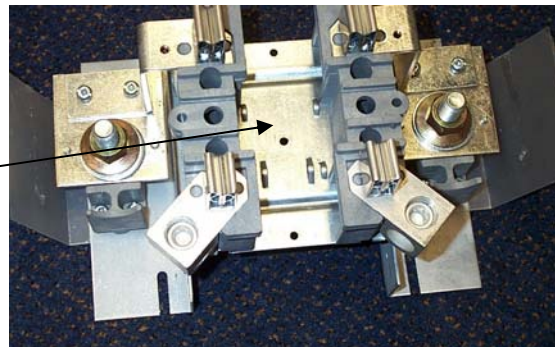
There are a number of reported incidents of supply conductors shorting to meter base covers, upon removal of meters from the meter base. Failure Analysis of the equipment indicates that downward pressure of the supply cables, is causing cracks or breaks in the porcelain or plastic in the meter base. When the meter is removed from the meter base the supply conductor is shorting to the meter cover.



ESA AND E&USA RECOMMEND:

ESA and E&USA recommend that the LDC's trained and qualified workers are alerted on the problem and take proper precautions. Actions may include:

- Identifying all potentially problem meter bases with an indicator, such as a warning sticker
- Arranging for isolation by the LDC at the transformer before pulling the meter, on problem meter bases
- Requirements for PPE and meter pulling tools, which direct any hazard away from Metering Personnel
- Secondary cables installed with slack
- Meter base socket retrofits, where adequate slack is available



ADDITIONAL INFORMATION:

If you can provide additional information on this Bulletin or any other Utility issue, please contact ESA to share your experiences. Additional information requests, and follow-up information, may be directed to ESA. Please be prepared to quote Bulletin "DSB-01/07".

For approved safe work methods contact E&USA.