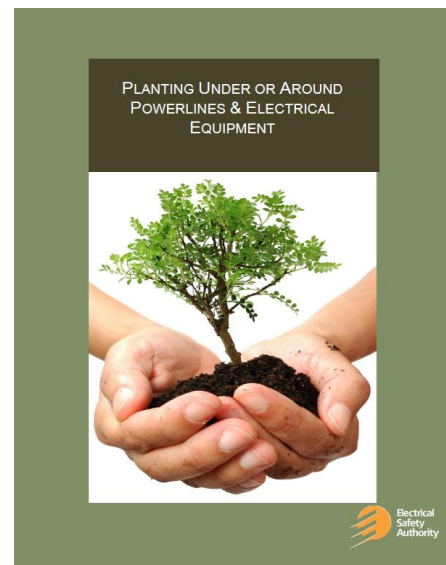
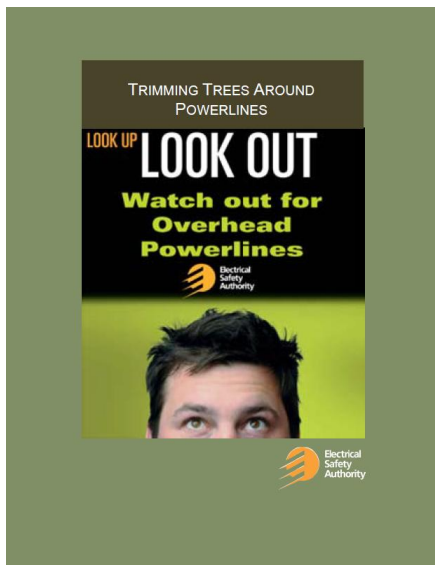


Electrical Distribution Safety

DISTRIBUTION COMPANY AWARENESS:

Due to incidents involving home owners, Arborists and Landscapers trimming or removing trees around energized overhead powerlines, the “Trimming Trees Around Powerlines” guideline was created by ESA to identify the electrical hazards of trimming or removing trees around energized powerlines.

In addition, a complementary document “Planting Under or Around Powerlines & Electrical Equipment” was also created for Landscape Architects, Landscapers, Municipalities and homeowners to help select the correct tree(s) and location which will not interfere with overhead and underground powerlines during the planting stage and once the tree(s) matures.



Members of Landscape Ontario and the Arborists Association will receive a copy of the guidelines in their April/ May association publications.

Soft copies of the guidelines are available at the following link: www.esasafe.com.

Please feel free to forward the information to any organizations that will benefit find these guidelines.

ADDITIONAL INFORMATION:

Information requests and follow-up may be directed to ESA at Utility.Regulations@ElectricalSafety.on.ca. For questions on this bulletin please be prepared to quote Bulletin “DIB-03/12”.