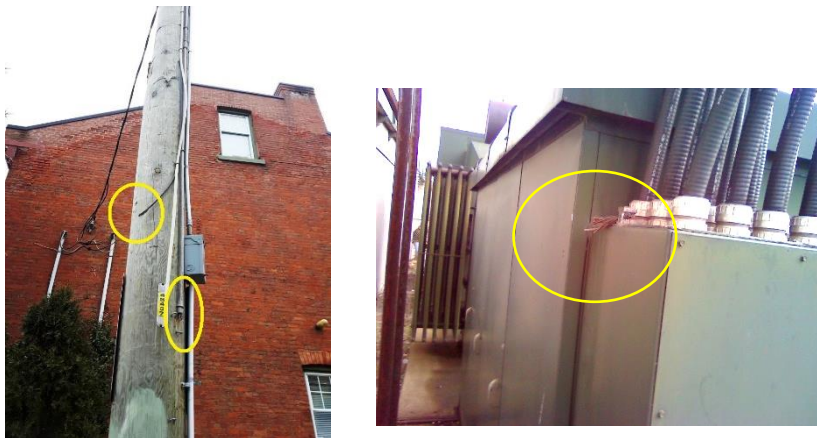


## Copper Theft

### Distribution Company Awareness

Theft of copper has increased over recent years, creating potential hazards. Copper theft affects public and worker safety, the reliability of the distribution system, and decreases the protection capability of the system.

Electrical Distributor's maintenance inspections, Public Safety Concerns and Due Diligence Inspections have identified numerous instances where copper has been stolen from locations such as fenced substations, bases of poles and transformer vaults.



The copper taken may include:

- Fence bonding to the ground grid and the interconnections between fence sections;
- Bonding and grounding of electrical equipment within the fenced substation and transformer vaults;
- Bonding and grounding from operating switch handles; and
- Pole ground wires.

### ESA Recommends

Electrical Distributor's scheduled maintenance inspections should identify where copper theft has occurred. Electrical Distributors should explore alternatives to reduce the risk of copper from being stolen. Where the Electrical Distributor is aware of copper theft, immediate action should be taken to address the imminent hazard.