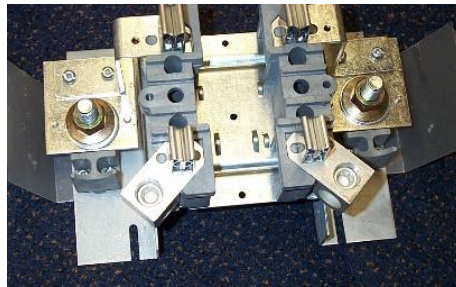


Working in Meter Bases

Distribution Company Awareness

ESA has received questions regarding working in meter bases. In general, the requirements with respect to working in meter bases depends on whether the work involved falls under Regulation 22/04 or under the Ontario Electrical Safety Code (OESC). If the work falls under the OESC then all the Code requirements, Contractor Licensing and Electrical Product Safety Regulation apply.



ESA Direction

When a meter base's socket is damaged and needs replacement, the replacement work shall be completed as per the OESC requirements. Upon discovery of a broken meter base, a Licenced Electrical Contractor shall be contacted to implement repairs.