

OVERVIEW

The following bulletin provides information about the selection of Guy Composite Insulators for use with phase conductors i.e.: in series with shedded suspension composite insulators (Deadend/Suspension Insulators).

The CSA Standard C411.7-11 (current version) mandates that Guy Composite Insulators for use with phase conductors must meet the minimum test duration of 1,000 h on Tracking Wheel No. 1 (Annex A) or 30,000 cycles on Tracking Wheel No. 2 (Annex B) when used in series with shedded suspension composite insulators (Deadend/Suspension Insulators). This requirement is the same as the phase conductor insulator in CSA C411.5-10. Please note that not all Guy Composite Insulators meet the Tracking Wheel Tests of the CSA Standard for this application.

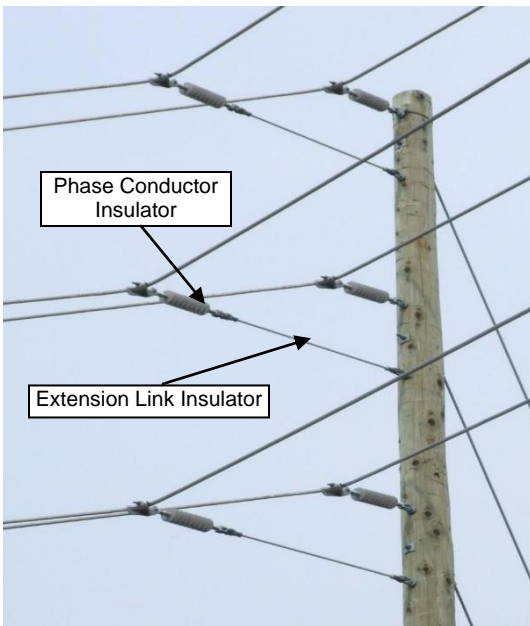


Figure 1



Figure 2

ESA RECOMMENDS

ESA recommends LDCs review their current practices, approved equipment and approved standards to ensure that Guy Composite Insulators, when used with phase conductors as extensions, meet Tracking Wheel Tests of CSA C411.7-11. Alternatively Extension Link Insulators (Figure 1) and Extension Insulators (Figure 2) are available for these electrical applications.

ADDITIONAL INFORMATION

Information requests and follow-up may be directed to ESA at Utility.Regulations@ElectricalSafety.on.ca. For questions on this bulletin please be prepared to quote Bulletin "DB-04/15".