

## **Electrical Safety Authority Warns of Potential Shock Hazard Associated with the incorrect installation of In-line Fuse Holders**

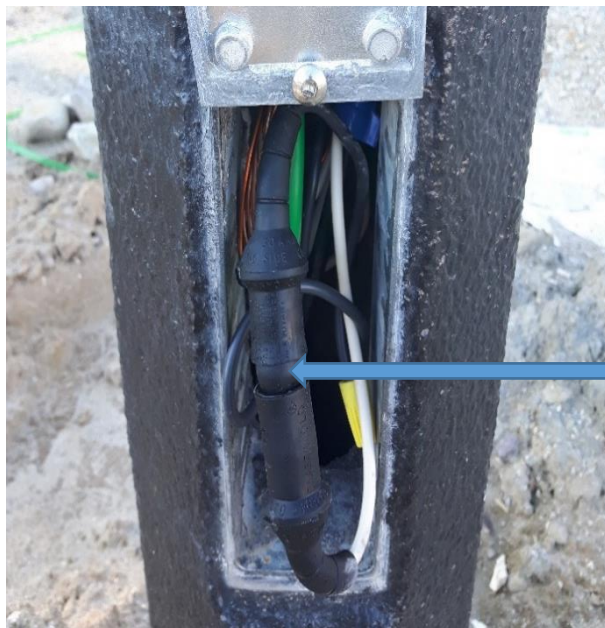
The Electrical Safety Authority (ESA) is warning end users and contractors about a potential shock hazard associated with the use of Thomas & Betts In-line Fuse Holder Models 65 and 65U.

ESA became aware that the fuse remains energized and connected to the line side of the circuit when the two halves are separated during maintenance and examination. This potential hazardous condition occurs when the fuse holder is not assembled in accordance to the accompanying manufacturer's instructions.

### ***Direction:***

End users and contractors are cautioned to ensure that they follow the manufacturer's installation instructions when using the Thomas & Betts In-line Fuse Holder Models 65 and 65U.

### **Example of incorrectly assembled Fuse Holder with a wide gap between holder halves**

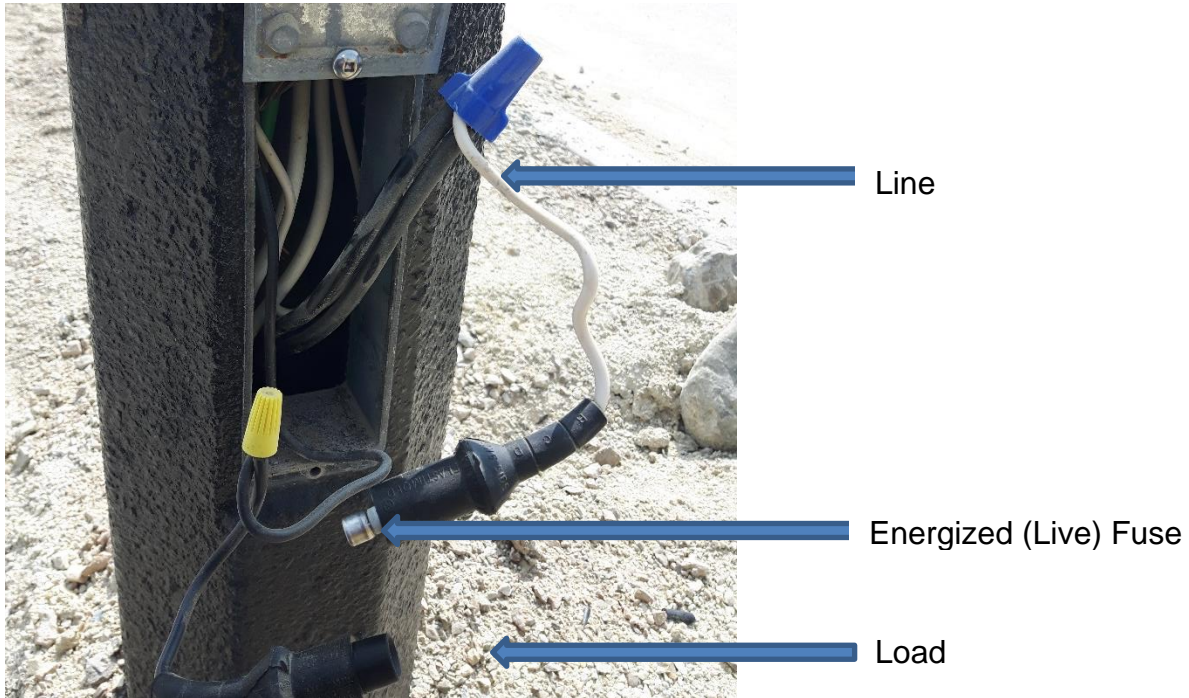


Wide Gap between  
fuse holder halves  
when assembled

# FLASH

May 2025

**Example of energized Fuse due to it remaining on the line side of fuse holder when halves are opened**



## Correctly Assembled Fuse Holder



When properly mated, the seam between housings should not exceed 1/32 inch as outlined in the manufacturer's instructions