

Bulletin 2-7-41
Approval of electrical equipment
Rules 2-022 and 2-024

Issued May 2026
Supersedes Bulletin 2-7-40

Scope

- 1) Approval requirements
- 2) Approval of customer owned metering equipment

1) Approval requirements

The Ontario Electrical Safety Code (OESC) and Ontario Regulation 438/07 “Product Safety,” recognize Certification Bodies accredited by the Standards Council of Canada to approve electrical equipment to meet the requirements of the Code. Only equipment bearing one of the marks shown in the following link are deemed acceptable by the Electrical Safety Authority (ESA): <https://esasafe.com/electrical-products/recognized-certification-marks/>.

To meet the requirements of the OESC, Rules 2-022 and 2-024, equipment shall be approved to a recognized Canadian standard

Photo B1 displays the European Conformity (CE) mark which is a manufacturer’s self-declaration mark that **is not recognized in Canada**:

Photo B1 – CE marking is not recognized in Canada



2) Approval of customer owned metering equipment

This Bulletin is intended to provide directions for acceptance of customer owned metering to be used to monitor consumption of electricity beyond the revenue metering owned by the Local Distribution Company (LDC).

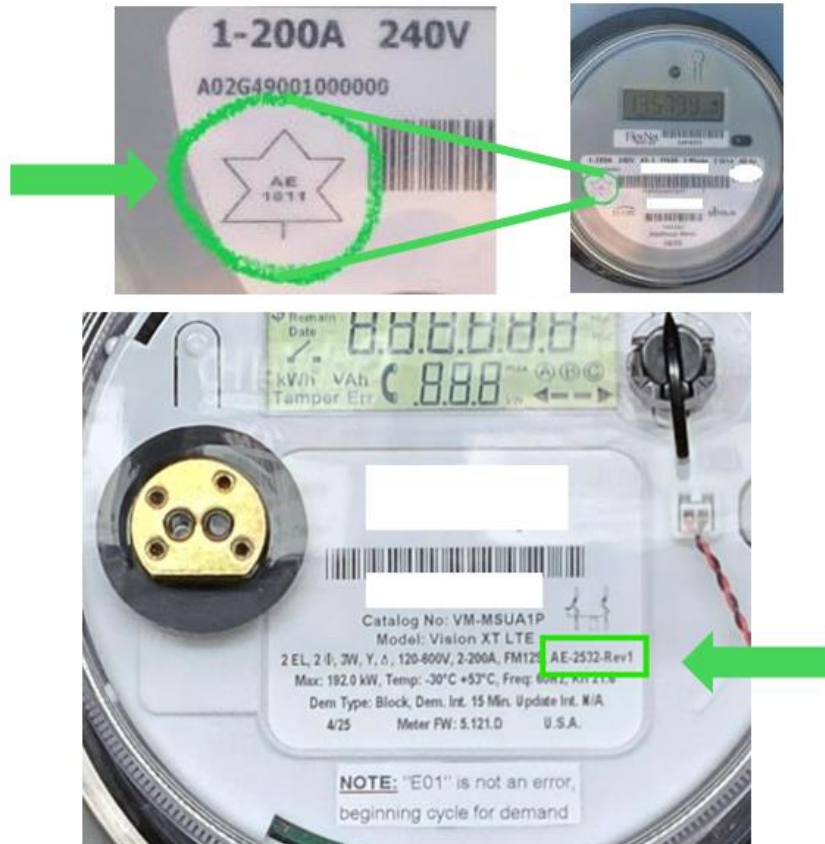
Question:

Can plug-in, in-line meters, which have been approved by Measurements Canada and marked, be accepted in Ontario after the service switch?

Answer:

Yes, notwithstanding rules 2-022 and 2-024, meters approved by Measurement Canada are accepted. Typically, the approval number is identified as "AE-xxxx" with two letter suffix + 4-digit number. See an example in photo B2.

Photo B2 – Socket sub meter



Notes:

1. The approval number may appear either within a maple leaf symbol or on its own, depending on the marking format used. The equipment can be found by searching for the Notice of Approval database.

<https://ised-isde.canada.ca/app/scr/nac/web/search-recherche>

2. Meters can also be approved by a certification agency accredited by the Standards Council of Canada (SCC) to a recognized Canadian standard, such as ANSI/CAN/UL